



# LTL LANGUAGE SCHOOL

— LIVE THE LANGUAGE —



## 2024 LTL School Trips

Available all year for groups. Program includes language courses, food, transport, accommodation, and exciting activities for all the students to experience the city at its finest.

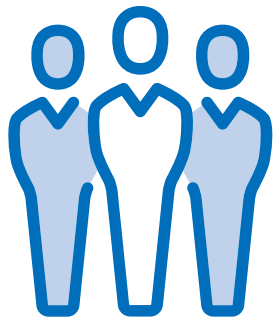
---

# Table of Contents

<b>3</b>	The LTL Guarantees
<b>4</b>	Beijing School Trip
<b>5</b>	Taipei School Trip
<b>6</b>	Tokyo School Trip
<b>7</b>	Seoul School Trip
<b>8</b>	Saigon School Trip
<b>9</b>	Activities
<b>10</b>	10 Days Schedule
<b>12</b>	14 Days Schedule
<b>14</b>	21 Days Schedule
<b>17</b>	Additional Full Day Activities
<b>18</b>	Additional Afternoon Activities
<b>20</b>	Contact

---

# The LTL Guarantees



## **SMALL GROUP CLASSES (Max. 8 students)**

20 language classes per week, each class 55 minutes.  
All books and study materials are already included.



## **CULTURAL ACTIVITIES**

All afternoon (Mon- Fri) cultural activities/field trips and weekend full day trips include entrance tickets.



## **ACCOMMODATION & FOOD**

Shared hotel rooms with private bathroom. All meals have vegetarian options and there is a special dinner every week.



## **TRANSPORTATION**

All transportation is included. Airport pickup with LTL Representative and drop off (private bus).

### **LTL School Trip already includes:**

- ✓ Language assessment and Final Certificate
- ✓ Pre charged public transportation card
- ✓ Luggage tag and metro card lanyard
- ✓ Free teachers according to the group size
- ✓ Teacher accommodation in single room or shared with another teacher
- ✓ 24/7 LTL Emergency Support
- ✓ Free WIFI
- ✓ Pre charged local sim card for 1 teacher
- ✓ Local Group Leader for activities

# Beijing School Trip

CNY Prices per Student

Students	Free Teacher	7 days	10 days	14 days	21 days
5-10	1	10,356	14,114	18,641	27,961
11-15	1	7,632	10,401	13,738	20,606
16-20	1	6,889	9,389	12,400	18,600
21-30	2	6,618	9,019	11,912	17,869
>31	3	6,524	8,891	11,743	17,615

# Additional Teacher

CNY Prices per Teacher

Accommodation	7 days	10 days	14 days	21 days
Single Room	5,343	7,633	10,686	16,029
Double Room	2,671	3,816	5,342	8,013

# Taipei School Trip

NTD Prices per Student

Students	Free Teacher	7 days	10 days	14 days	21 days
5-10	1	56,400	80,400	106,100	154,000
11-15	1	43,400	61,800	81,600	118,500
16-20	1	43,000	61,300	80,900	117,400
21-30	2	40,400	57,600	76,000	110,300
>31	3	39,700	56,600	74,700	108,400

# Additional Teacher

NTD Prices per Teacher

Accommodation	7 days	10 days	14 days	21 days
Single Room	39,900	57,000	79,800	119,700
Double Room	19,950	28,500	39,900	59,850

# Tokyo School Trip

JPY Prices per Student

Students	Free Teacher	7 days	10 days	14 days	21 days
5-10	1	367,000	523,000	690,000	1,001,000
11-15	1	283,000	402,000	531,000	771,000
16-20	1	280,000	399,000	526,000	764,000
21-30	2	263,000	375,000	494,000	717,000
>31	3	259,000	368,000	486,000	705,000

# Additional Teacher

JPY Prices per Teacher

Accommodation	7 days	10 days	14 days	21 days
Single Room	260,000	371,000	519,000	779,000
Double Room	130,000	186,000	260,000	390,000

# Seoul School Trip

KRW Prices per Student

Students	Free Teacher	7 days	10 days	14 days	21 days
5-10	1	2,540,000	3,620,000	5,060,997	7,620,000
11-15	1	2,280,000	3,260,000	4,560,000	6,840,000
16-20	1	2,150,000	3,070,000	4,290,000	6,450,000
21-30	2	2,060,000	2,950,000	4,120,000	6,180,000
>31	3	2,020,000	2,890,000	4,040,000	6,060,000

# Additional Teacher

KRW Prices per Teacher

Accommodation	7 days	10 days	14 days	21 days
Single Room	1,490,000	2,130,000	2,970,000	4,470,000
Double Room	745,000	1,065,000	1,485,000	2,235,000

# Saigon School Trip

USD Prices per Student

Students	Free Teacher	7 days	10 days	14 days	21 days
5-10	1	846	1,206	1,592	2,310
11-15	1	651	927	1,224	1,778
16-20	1	645	920	1,214	1,761
21-30	2	606	864	1,140	1,655
>31	3	596	849	1,121	1,626

# Additional Teacher

USD Prices per Teacher

Accommodation	7 days	10 days	14 days	21 days
Single Room	599	855	1,197	1,796
Double Room	299	428	599	898



---

# Activities

**One Cultural Activity or Field Trip** every day from Monday to Friday in the afternoon. Activities can be modified. Some activities are free of charge to change and some require an additional fee.

**One Full Day Trip** activity every Saturday. Additional Sunday Activities can be added for an extra charge. Further details on page 8.

**Three Weekly Challenges** every week during afternoon activities where students will play games, complete fun tasks and interact with local residents.

Summer Surcharge from the 9th June to 9th August 2024.

An additional 10% high season surcharge applies.

Our School Trip Programs are available in 7, 10, 14 and 21 day programs. Likewise, we can also create a tailored program for whatever number of days suits your school the best. For other durations or programs, please contact [info@ltl-school.com](mailto:info@ltl-school.com)

# 10 Days Schedule

# Week 1 Sample Plan

Time	09:00 – 10:00	10:00 – 12:00	12:00 – 13:00	13:00 – 15:00	15:00 – 18:00	18:00 – 19:30
Sunday	Arrival					Dinner in Restaurant
Monday	Breakfast	Mandarin Class	Lunch at School	Mandarin Class	<b>Forbidden City</b> Interview Challenge	Dinner in Restaurant
Tuesday	Breakfast	Mandarin Class	Lunch at School	Mandarin Class	<b>Temple of Heaven</b> Field Trip	Dinner in Restaurant
Wednesday	Breakfast	Mandarin Class	Lunch at School	Mandarin Class	<b>Hu Tong Tour</b> Picture Challenge	Dinner in Restaurant
Thursday	Breakfast	Mandarin Class	Lunch at School	Mandarin Class	<b>Chaoyang Park</b> Field Trip	Dinner in Restaurant
Friday	Breakfast	Mandarin Class	Lunch at School	Mandarin Class	<b>Capital Museum</b> History Challenge	<b>Beijing Duck</b> Dinner
Saturday	Breakfast	Tourism Teamwork at the <b>Great Wall</b> - Mutianyu				Dinner in Restaurant

# 10 Days Schedule

# Week 2 Sample Plan

Time	09:00 – 10:00	10:00 – 12:00	12:00 – 13:00	13:00 – 15:00	15:00 – 18:00	18:00 – 19:30
Sunday	Breakfast	Free Time				Dinner in Restaurant
Monday	Breakfast	Mandarin Class	Lunch at School	Mandarin Class	<b>Pan Jia Yuan Market</b> Antique Prices Challenge	Dinner in Restaurant
Tuesday	Breakfast	Mandarin Class	Lunch at School	Course Evaluation	Departure	

# 14 Days Schedule

# Week 1 Sample Plan

Time	09:00 – 10:00	10:00 – 12:00	12:00 – 13:00	13:00 – 15:00	15:00 – 18:00	18:00 – 19:30
Sunday	Arrival					Dinner in Restaurant
Monday	Breakfast	Mandarin Class	Lunch at School	Mandarin Class	<b>Forbidden City</b> Interview Challenge	Dinner in Restaurant
Tuesday	Breakfast	Mandarin Class	Lunch at School	Mandarin Class	<b>Temple of Heaven</b> Field Trip	Dinner in Restaurant
Wednesday	Breakfast	Mandarin Class	Lunch at School	Mandarin Class	<b>Hu Tong Tour</b> Picture Challenge	Dinner in Restaurant
Thursday	Breakfast	Mandarin Class	Lunch at School	Mandarin Class	<b>Chaoyang Park</b> Field Trip	Dinner in Restaurant
Friday	Breakfast	Mandarin Class	Lunch at School	Mandarin Class	<b>Capital Museum</b> History Challenge	<b>Beijing Duck</b> Dinner
Saturday	Breakfast	Tourism Teamwork at the <b>Great Wall</b> - Mutianyu				Dinner in Restaurant

# 14 Days Schedule

# Week 2 Sample Plan

Time	09:00 – 10:00	10:00 – 12:00	12:00 – 13:00	13:00 – 15:00	15:00 – 18:00	18:00 – 19:30
Sunday	Free Time					Dinner in Restaurant
Monday	Breakfast	Mandarin Class	Lunch at School	Mandarin Class	<b>Houhai Lake</b> Scavenger Hunt	Dinner in Restaurant
Tuesday	Breakfast	Mandarin Class	Lunch at School	Mandarin Class	<b>Temple of Sun Park</b> Field Trip	Dinner in Restaurant
Wednesday	Breakfast	Mandarin Class	Lunch at School	Mandarin Class	<b>798 Art District</b> Art Challenge	Dinner in Restaurant
Thursday	Breakfast	Mandarin Class	Lunch at School	Mandarin Class	<b>Lama Temple</b> Field Trip	Dinner in Restaurant
Friday	Breakfast	Mandarin Class	Lunch at School	Mandarin Class	<b>Pan Jia Yuan Market</b> Antique Prices Challenge	<b>Hot Pot</b> Dinner
Saturday	Breakfast	Course Evaluation	Departure			

# 21 Days Schedule

# Week 1 Sample Plan

Time	09:00 – 10:00	10:00 – 12:00	12:00 – 13:00	13:00 – 15:00	15:00 – 18:00	18:00 – 19:30
Sunday	Arrival					Dinner in Restaurant
Monday	Breakfast	Mandarin Class	Lunch at School	Mandarin Class	<b>Forbidden City</b> Interview Challenge	Dinner in Restaurant
Tuesday	Breakfast	Mandarin Class	Lunch at School	Mandarin Class	<b>Temple of Heaven</b> Field Trip	Dinner in Restaurant
Wednesday	Breakfast	Mandarin Class	Lunch at School	Mandarin Class	<b>Hu Tong Tour</b> Picture Challenge	Dinner in Restaurant
Thursday	Breakfast	Mandarin Class	Lunch at School	Mandarin Class	<b>Chaoyang Park</b> Field Trip	Dinner in Restaurant
Friday	Breakfast	Mandarin Class	Lunch at School	Mandarin Class	<b>Capital Museum</b> History Challenge	<b>Beijing Duck</b> Dinner
Saturday	Breakfast	Tourism Teamwork at the <b>Great Wall</b> - Mutianyu				Dinner in Restaurant

# 21 Days Schedule

# Week 2 Sample Plan

Time	09:00 – 10:00	10:00 – 12:00	12:00 – 13:00	13:00 – 15:00	15:00 – 18:00	18:00 – 19:30
Sunday	Free Time					Dinner in Restaurant
Monday	Breakfast	Mandarin Class	Lunch at School	Mandarin Class	<b>Beijing Museum of Natural History</b> History Quiz	Dinner in Restaurant
Tuesday	Breakfast	Mandarin Class	Lunch at School	Mandarin Class	<b>Olympic Park</b> Field Trip	Dinner in Restaurant
Wednesday	Breakfast	Mandarin Class	Lunch at School	Mandarin Class	<b>Lama Temple</b> Field Trip	Dinner in Restaurant
Thursday	Breakfast	Mandarin Class	Lunch at School	Mandarin Class	<b>798 Art District</b> Art Challenge	Dinner in Restaurant
Friday	Breakfast	Mandarin Class	Lunch at School	Mandarin Class	<b>Pan Jia Yuan Market</b> Antique Prices Challenge	<b>Hot Pot</b> Dinner
Saturday	Breakfast	<b>Summer Palace</b>				Dinner in Restaurant

# 21 Days Schedule

# Week 3 Sample Plan

Time	09:00 – 10:00	10:00 – 12:00	12:00 – 13:00	13:00 – 15:00	15:00 – 18:00	18:00 – 19:30
Sunday	Free Time					Dinner in Restaurant
Monday	Breakfast	Mandarin Class	Lunch at School	Mandarin Class	<b>Prince Gong Residence</b> Field Trip	Dinner in Restaurant
Tuesday	Breakfast	Mandarin Class	Lunch at School	Mandarin Class	<b>Houhai Lake</b> Scavenger Hunt	Dinner in Restaurant
Wednesday	Breakfast	Mandarin Class	Lunch at School	Mandarin Class	<b>Temple of Sun Park</b> Field Trip	Dinner in Restaurant
Thursday	Breakfast	Mandarin Class	Lunch at School	Mandarin Class	<b>Tsinghua University</b> Find the Answer	Dinner in Restaurant
Friday	Breakfast	Mandarin Class	Lunch at School	Mandarin Class	<b>Wang Fu Jing</b> Interview Challenge	<b>BBQ</b> Dinner
Saturday	Breakfast	Course Evaluation	Departure			



## Additional Full Day Activities

It is possible to add additional activities on Sundays at an extra charge or change activities during the week, some at no cost while some have additional charges.



Happy Valley (March - Nov)  
**440 CNY / student**



Houhai Ice Skating (Dec - March)  
**280 CNY / student**



Longqing Gorge (May - Sep)  
**470 CNY / student**



Skiing (Dec - March)  
**360 CNY / student**

# Additional Afternoon Activities

Laoshe Tea House **350 CNY / student**

Beijing Opera **97 CNY / student**

Bowling **150 CNY / student**

Cinema **33 CNY / student**

Pottery Class **317 CNY / student**

Tai Chi Class **333 CNY / 10 students**

Calligraphy Class **233 CNY / 10 students**

Chinese Cooking **333 CNY / 10 students**



Kung Fu Class **333 CNY / 10 students**



Lama Temple **FREE**

Wang Fu Jing **FREE**



798 Art District **FREE**

Temple of Sun Park **FREE**



Olympic Park **FREE**

Houhai Lake **FREE**

Tuanjiehu Park **FREE**

Tsinghua University **FREE**

Prince Gong Residence **FREE**

Badminton Class **FREE**

Ping Pong Class **FREE**

☂ We plan one “rainy day” activity per week which can be organized in case it rains. However, please note that this is usually only necessary during the rainy season (from middle of June to end of August), as during the rest of the year rain in Beijing is very rare.

If you have any questions regarding activities, want something specific organized for your group or need recommendations, please feel free to ask us at any time.

---

# Contact for All LTL Schools

✉ info@ltl-school.com

☎ +86 (0) 10 6512 9057

🕒 Mon-Fri 9am - 6pm Singapore time

🌐 Learn more about LTL School Programs: [www.ltl-school.com](http://www.ltl-school.com) ➔



**LTL LANGUAGE SCHOOL**  
— LIVE THE LANGUAGE —